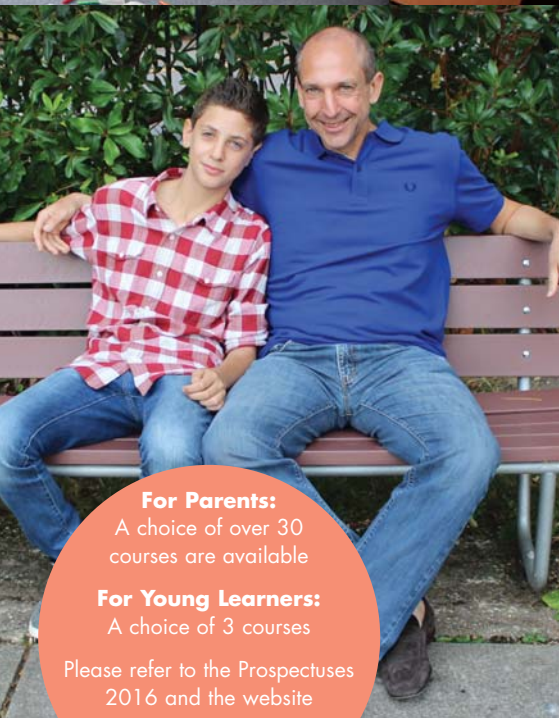




Anglo-Continental
for English in England

Parent and Child 2016



For Parents:

A choice of over 30 courses are available

For Young Learners:

A choice of 3 courses

Please refer to the Prospectuses 2016 and the website

www.anglo-continental.com



With our extensive range of English language programmes, Anglo-Continental is pleased to offer courses for parents who wish to study at the same time as their children. All our courses take place in Bournemouth, a renowned coastal resort and an ideal location for a relaxing holiday. The choice is simply between:

study at the same centre	+	same homestay
	or	
study at the same centre	+	different homestay

For parents, there are over 30 different courses available. The most popular course combination is:

PARENT	+	CHILD						
Course G-1.20 20 lessons per week		Course C-2.20 20 lessons per week plus excursions, sports and leisure activities						
Course fees - G-1.20	+	Course fees - C-2.20						
2 weeks £ 545 3 weeks £ 750 Each additional week £ 205		2 weeks £ 905 3 weeks £ 1305 Each additional week £ 400						
Homestay accommodation 18+ fees - twin room	+	Homestay accommodation fees - twin room						
2 weeks £ 364 Each additional week £ 152		<table border="1"> <thead> <tr> <th>Age Group: 10-12</th> <th>Age Group: 13-15</th> </tr> </thead> <tbody> <tr> <td>2 weeks £ 704 Each additional week £ 322</td> <td>2 weeks £ 560 Each additional week £ 250</td> </tr> <tr> <td>Compulsory supervised door-to-door car service to/from course centre included in the accommodation fees</td> <td>Optional supervised door-to-door car service to/from course centre: £72 per week</td> </tr> </tbody> </table>	Age Group: 10-12	Age Group: 13-15	2 weeks £ 704 Each additional week £ 322	2 weeks £ 560 Each additional week £ 250	Compulsory supervised door-to-door car service to/from course centre included in the accommodation fees	Optional supervised door-to-door car service to/from course centre: £72 per week
Age Group: 10-12	Age Group: 13-15							
2 weeks £ 704 Each additional week £ 322	2 weeks £ 560 Each additional week £ 250							
Compulsory supervised door-to-door car service to/from course centre included in the accommodation fees	Optional supervised door-to-door car service to/from course centre: £72 per week							
Twin room, sharing with your child, including high season supplement but excluding lunch Monday to Friday		Twin room, sharing with parent, including lunch Monday to Friday and high season supplement						

Course Entry Dates 2016

Every Monday from 6 June to 15 August 2016.

Transfers from/to London Heathrow Airport

- Anglo-Continental coach transfer on Sundays only. Price £ 90 per person return, when travelling together.

- Private car transfer. Price £ 356 per car return, when travelling together (2 passengers including luggage).
- Prices from other points of arrival/departure on request.

Parent + Child

Special Notes

Supervised door-to-door car service

The supervised door-to-door car service is included in the accommodation fees for all Young Learners aged 10-12 years old enrolled on Course C-2.20. This service is available, at additional cost, for Young Learners aged 13-15 years old. This service is NOT available to any adult person. However, if parents wish to accompany their children to and from school each day, this service MAY be waived and a fee adjustment made, provided that the parent signs a declaration stating he/she will be completely responsible for their child outside the hours of the lessons and activities. In these circumstances, a refundable deposit of £ 100 must be made on the first day at school to pay for any door-to-door service that is required due to a parent not being available at the end of the day to accompany their child back to the accommodation address.

Sports, Leisure Activity and Excursion Programme

Young Learners enrolled on Course C-2.20 follow a full programme of sports and leisure activities which run from Monday to Friday. The programme is designed to help young students to benefit from the international atmosphere by making friends with other students and communicating in English. As always, the safety and wellbeing of our young students is our top priority and supervision levels by our experienced staff is extremely high. The Young Learners sports and leisure programme is **available only** for Young Learners.

If the parent and child wish to follow the same excursion on a Saturday, they may book one of the specified Anglo-Continental adult or vacation excursions. In this event, whilst the parent will pay the published price, the child may go free of charge as it will be considered a substitute for the scheduled Young Learners excursion.

For further information please contact:

Anglo-Continental

29-35 Wimborne Road, Bournemouth BH2 6NA, England

telephone (GB code) +(0)1202 55 74 14

fax (GB code) +(0)1202 55 61 56

email english@anglo-continental.com

website www.anglo-continental.com

