



ALTERNATIVE ACCOMMODATION DURLEY CHINE HOTEL

9 Durley Road
Westbourne
BH2 5JH
Telephone: 07860 905977
Email: a.olayan@hotmail.com

The Durley Chine Hotel is a newly refurbished hotel offering residential accommodation for students staying in Bournemouth.

The residence is available for students aged 18 and older. Students under 18 can stay in the hotel under the supervision of a parent/guardian staying in the same hotel room.



Location

The residence is just 25 minutes' walk from Anglo-Continental and 15 minutes' walk to Bournemouth town centre.

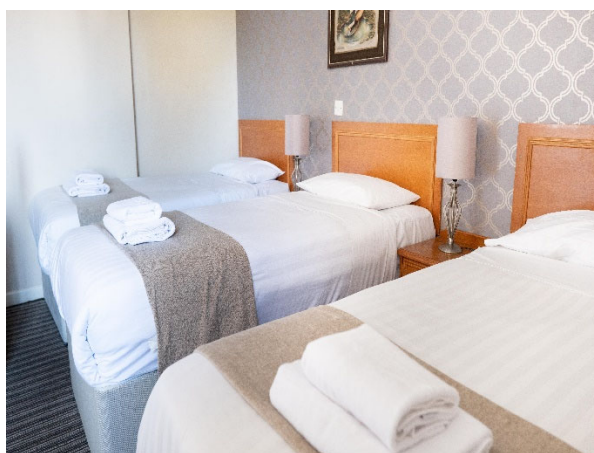
Rooms Types:			
Single	(2 available)	Twin Room	(5 available)
Double	(17 available)	Family Room	(5 available) 3 beds – 1 double and two singles
Triple	(11 available)		



Single Room



Twin Room



Triple Room



Double Room

Facilities

The hotel has a large lobby and a fully-equipped kitchen. Each room has:

- TV
- Internet connection
- Tea and coffee making facilities
- Hairdryer
- Towels
- Linen
- Wardrobe
- Chest of drawers/shelves
- Study area/table

Linen is changed weekly, and rooms are also cleaned once per week. If more frequent cleaning is required, this will be charged at £10 per cleaning session.



Reception



Kitchen



Bathroom



Dining Room



Shower room



Study area and TV

Room Rates 2022

Room Type	Low Season 01 January to 30 June and 01 October to 31 December 2022
Single Room	£250 per week
Twin/Triple room	£170 per week for each person (double occupancy)

Reservation

To reserve a room in the hotel, send an enquiry directly to the hotel with your requirements:

a.olayan@hotmail.com

Payment is to be made directly with the hotel. If you require Anglo-Continental to make the reservation for you a non-refundable administration fee of 5% of the total booking fee per room will be charged (minimum £25). Other alternative accommodation is available on our website: www.anglo-continental.com/alternative.html.

Contact Us

For additional information, please contact: english@anglo-continental.com