



English Language and Activity Programme 2026

The English language and activity course consists of 20 General English language lessons per week.

Classes

Your son/daughter will study in a lively international atmosphere with others whose levels of English are similar. Your son/daughter will be taught by a team of two teachers, who encourage participation and interaction between members of the group - and English will be the only language used!

Lessons

The lessons will be stimulating and effective, with a variety of activities to develop your son/daughter's confidence, knowledge and skills:

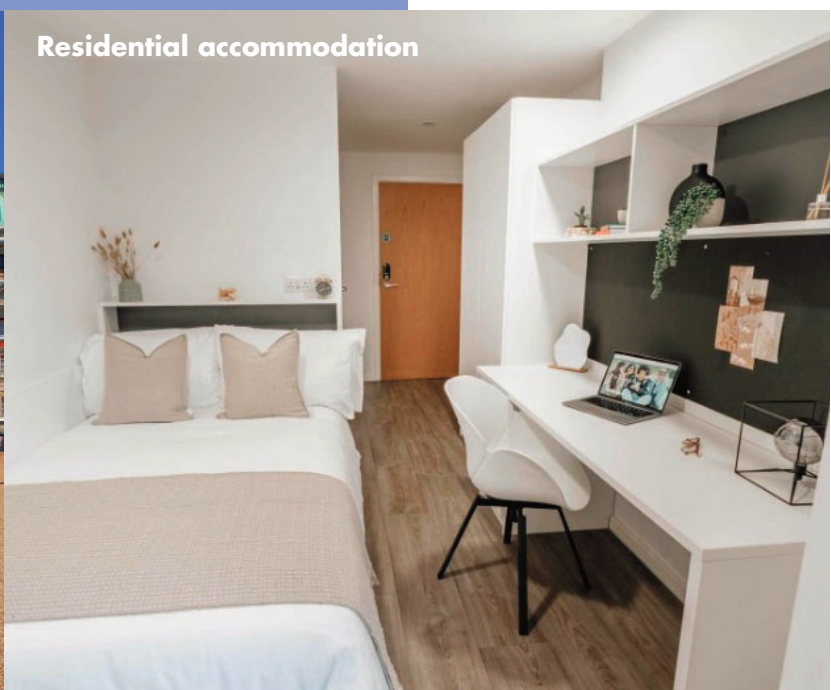
- lively presentation and practice of new language
- rapid development of oral fluency, accuracy and conversation skills
- systematic development of listening, reading and writing skills
- extension of vocabulary, structure and usage

Excursions, Sports and Leisure Activities

A wide variety of excursions, sports and leisure activities are an integral part of the programme. Students develop their language during activities and excursions using quizzes and worksheets about the destination or activity. Excursions and activities are also followed up in class and students are encouraged to develop language through their experiences.



Sightseeing tour



Residential accommodation

English language and activity courses 2026

Residential accommodation - en-suite single room

Course number	C-2.20R	V-2.20R
Lessons per week (lesson duration: 45 minutes)	20	20
Language levels	Beginner* to Advanced	Beginner* to Advanced
CEFR levels	A1* - C1	A1* - C1
Class size	Average 13 (max.15)	Average 13 (max.15)
Full day excursions	1 per week	1 per week
Daytime leisure activities	5 per week	5 per week
Age group	10 - 16	16 -17
Course duration (weeks)	2 - 3	2 - 3
Courses held between	13 July - 15 August	13 July - 15 August
Course fees	British Pounds Sterling (£)	British Pounds Sterling (£)
First 2 weeks	1210	900
Each additional week	515	360
Accommodation fees British Pounds Sterling (£)	Residential single en-suite room	
First 2 weeks	1750	
Each additional week	750	

Course fees include...

- Enrolment fee
- Entry test
- Tuition
- Teaching materials
- Student card
- Certificate of Studies
- Orientation on first day
- Wi-Fi
- Sports and leisure activities information available online:
www.anglo-continental.com/young-learners

Accommodation fees include...

- Residential en suite room
- Wi-Fi

Meals

- A hot lunch Monday to Friday is taken at the centre
- Breakfasts, dinners and weekend lunches arranged by the residence
- Packed lunch for excursion

Airport transfers

www.anglo-continental.com/transfers



These are prices for individual students. Please contact us for a group quotation or non-standard entry date.

Course entry dates 2026 C-2.20R, V-2.20R

January ~	February ~	March ~	April ~	May ~	June ~	July 13, 20*, 27	August 3	September ~	October ~	November ~	December ~
--------------	---------------	------------	------------	----------	-----------	------------------------	-------------	----------------	--------------	---------------	---------------

* Beginners may start their courses only on the entry dates marked with asterisks (*)